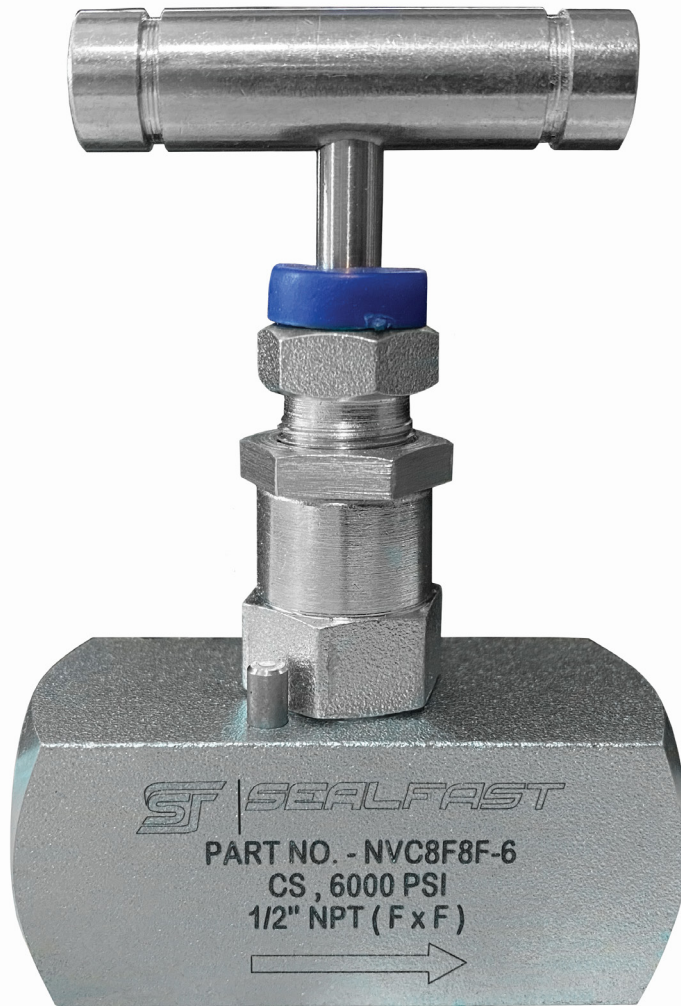




SEALFAST
THE SIMPLE SOLUTION

PIPE FITTINGS & VALVES



VALVES

FULL SIZE NEEDLE -

STD SINGLE BONNET - CARBON STEEL

6,000 PSI - SOFT SEAT

F X F

FEATURES & APPLICATIONS:

- Sizes available from 1/4" TO 1/2" .
- Screwed single bonnet assembly, Body to bonnet metal seat .
- Pressure rated for 6,000 psi @ 98° F
- Stem seat: Delrin soft seat
- Available in materials 316 SS & Carbon Steel

FEATURES :

- Temperature rating from -65° to 450°F
- Compact body design
- Back seat stem to prevent accidental removal
- Dust & thread caps provided for ingress dust protection

• WOG = Rating indicates the maximum non-shock pressure at ambient temperatures at which the valve may be used.

• CWP = Cold working pressure

CARBON STEEL

Size	INLET / OUTLET	6,000 psi #
1/4"	F x F	NVC4F4F-6
1/2"	F x F	NVC8F8F-6
3/4"	F x F	NVC12F12F-6
1"	F x F	NVC16F16F-6

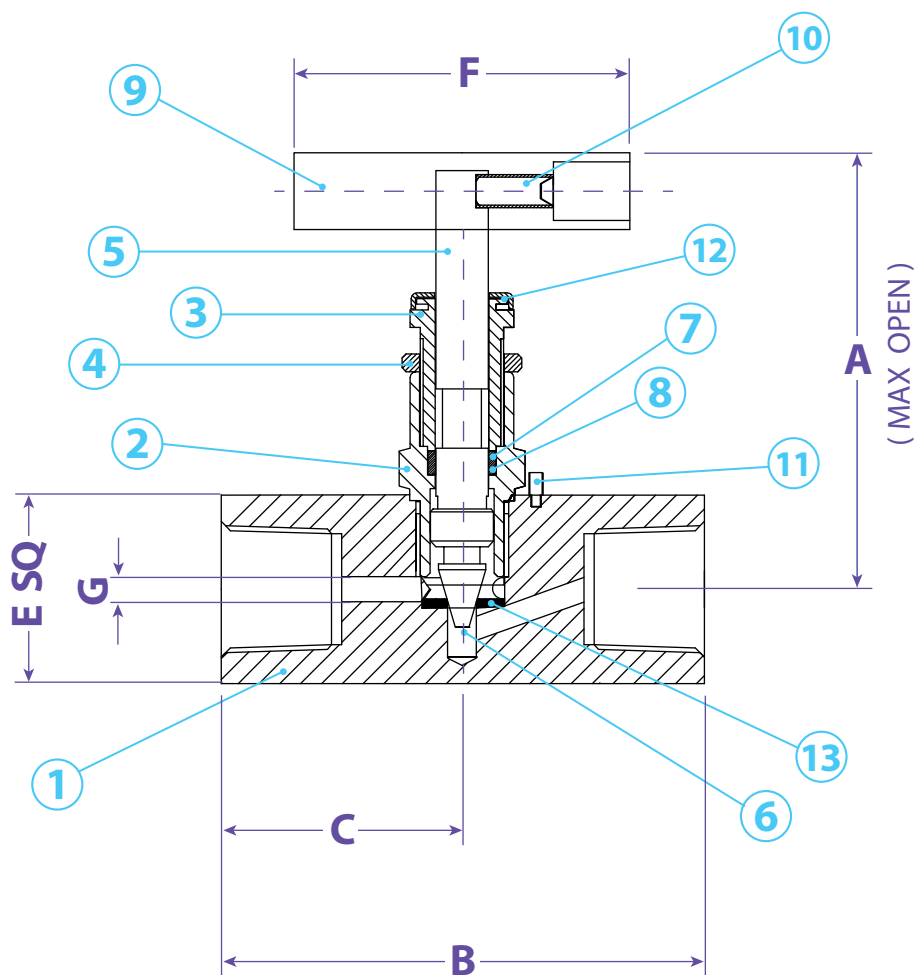
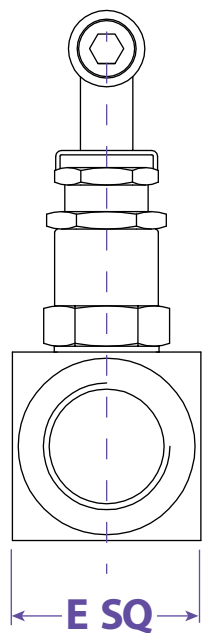


Information contained on this page is for general information purposes only. Seal Fast Inc. assumes no responsibility for errors or omissions for this product.



SEALFAST
THE SIMPLE SOLUTION

PIPE FITTINGS & VALVES



Dimensions

Size		A	B	C	ESQ	F	G	Part #
1/4"	F x F	3.37	2.17	0.89	0.87	1.97	0.16	NVC4F4F-6
1/2"	F x F	3.48	2.26	1.28	1.10	1.97	0.18	NVC8F8F-6
3/4"	F x F	3.68	2.76	1.28	1.50	2.36	0.24	NVC12F12F-6
1"	F x F	4.60	3.15	1.57	1.57	2.36	0.28	NVC16F16F-6

Material

No.	Description	Qty.	Material
1	Body	1	CS
2	Bonnet	1	CS
3	Adj. Bonnet	1	CS
4	Locking Nut	1	CS
5	Stem	1	304 SS
6	Rotating Tip	1	17.4 PH
7	O-Ring	1	Viton
8	Packing	1	Teflon
9	Handle	1	CS
10	Allen Screw	1	CS
11	Stopper Pin	1	SS
12	Dust Cap	1	Nylon
13	Soft Seat	1	Derlin

TITLE

NEEDLE VALVES - STD DOUBLE BONNET - 6K - F x F

DISCLAIMER

All drawings and specifications are subject to change without notice. Drawings represent general dimensions of our products. Seal Fast cannot guarantee the dimensions of the part will exactly match those in the drawing. This drawing is the property of Seal Fast Inc. Copying or reproduction of this drawing is expressly prohibited.

MATERIAL

CARBON STEEL

DRAWING NOT TO SCALE

PART #

NVC.F.F-6